



Convectors



KORADO, a.s.
Bří Hubálků 869
560 02 Česká Třebová
Czech Republic

e-mail: info@korado.cz
www.korado.com



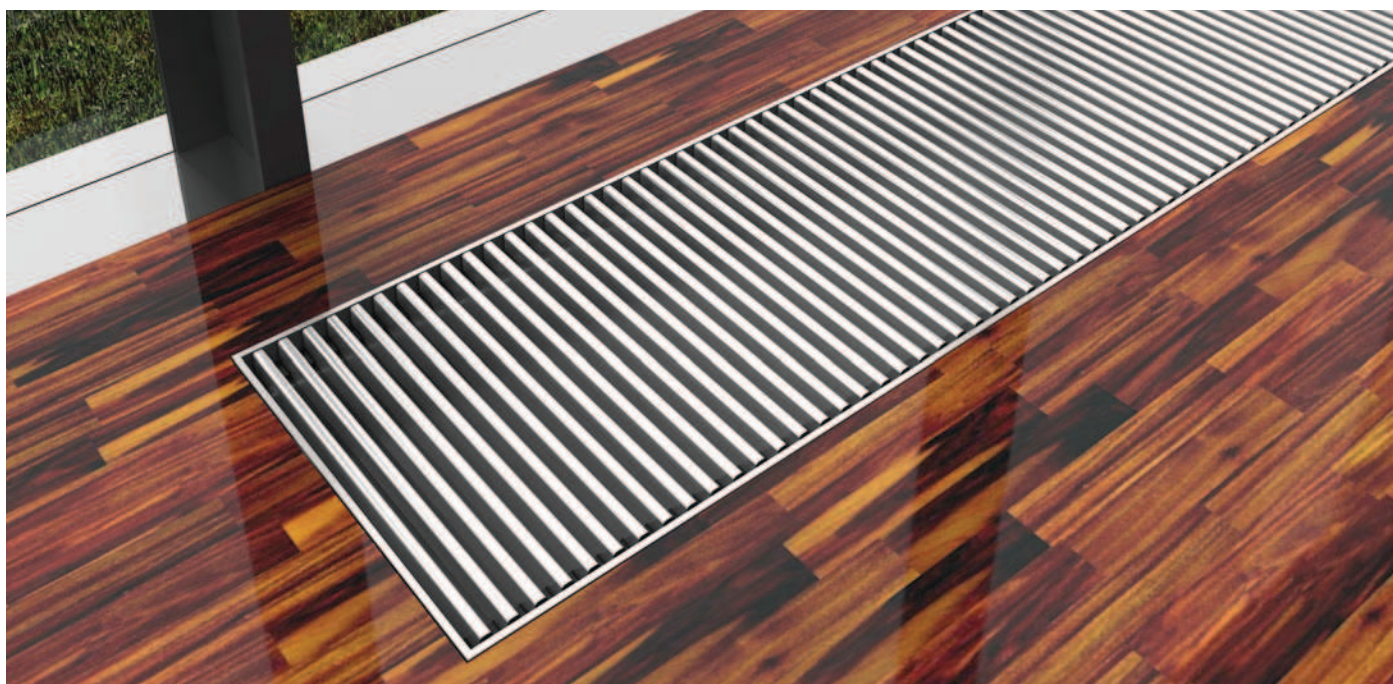


[KORAFLEX PM

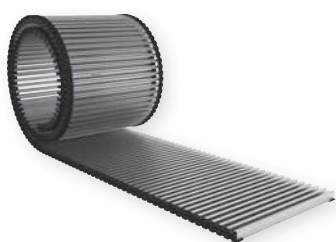
COVER GRIDS of the floor convectors KORAFLEX

Take care with every detail and choose from a wide range of cover grids of the floor convectors, so that they are the top complement of the interior. Intentionally visible or quietly blending into its environment. The grids are the same for all types of the floor convectors KORAFLEX. Wide selection of lengths, special surface finishes in the rolling or longitudinal designs.

Grid eloxal coat finish Aluminium



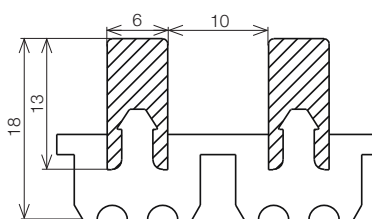
Rolling



Linear*



Permeability 66 %



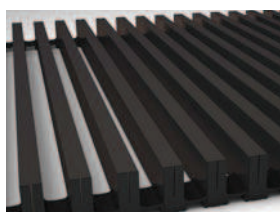
Dimensions in mm

* Ordering of the aluminium linear floor grids is only possible with the appropriate convectors
* The frame is not part of the cover grid but part of the floor convectors.

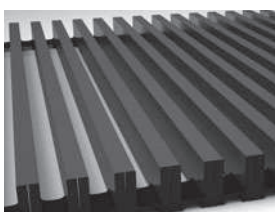
Colour availability of aluminium grids



aluminium/silver



aluminium/bronze



aluminium/light bronze

The floor grids are made of natural materials and therefore minor deviations in the colour design cannot be eliminated.
The supplier cannot fully guarantee the presented colours and accept complaints for the reason of possible colour deviations.

Version elox is designed for dry and humid environment



Ordering codes Aluminium grids

Aluminium grids						Grid design	Material and colours of lamellas	Lamellas' joint design			
						R lateral	10 aluminium silver				
						L longitudinal	11 aluminium bronze				
							12 aluminium light bronze	1 black plastic strip (PM AL)			
			Length (cm)	Width (cm)							
aluminium/silver	PM	-	-	R		10	1	0	0
aluminium/bronze	PM	-	-	R		11	1	0	0
aluminium/light bronze	PM	-	-	R		12	1	0	0
* custom-made design											
		Floor grids KORAFLEX PM						Grid type for connected KORAFLEX FK			
								0 grid designed for the case type P0 or for the first convectors in the connected cases assembly			
								2 grid designed for the second and every subsequent convectors in the connected cases assembly*			
								Surface finish of the lamellas 0 without any finish			

* custom-made design

Floor grids
KORAFLEX PM

Grid type for connected KORAFLEX FK
0 grid designed for the case type P0 or for the first convectors in the connected cases assembly
2 grid designed for the second and every subsequent convectors in the connected cases assembly*

Surface finish
of the lamellas
0 without
any finish

Grids design Wood



Colour availability of wooden grids



beech



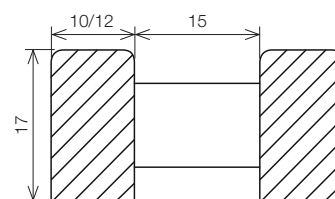
oak



mahogany

The floor grids are made of natural materials and therefore minor deviations in the colour design cannot be eliminated. The supplier cannot fully guarantee the presented colours and accept claims due to possible colour deviations.

Permeability 60 %



Dimensions in mm



Ordering codes Wooden grids

Wooden grids							Lamellas' joint design		Surface finish of the lamellas	
		Length (cm)	Width (cm)				2 black spacer (standard only for mahogany)		0 without any finish	
							3 beige spacer (standard only for beech and oak)		1 clear varnish coat*	
beech	PM	-	-	R	20	3	0	0
oak	PM	-	-	R	21	3	0	0
mahogany	PM	-	-	R	22	2	0	0

* custom-made design

Floor grids
KORAFLEX PM

Grid design
R lateral

Material and colours of lamellas

20 beech

21 oak

22 mahogany

Grid type for connected KORAFLEX FK

0 grid designed for the case type P0 or for the first convectors in the connected cases assembly

2 grid designed for the second and every subsequent convectors in the connected cases assembly*

* custom-made design

Floor grids
KORAFLEX PM

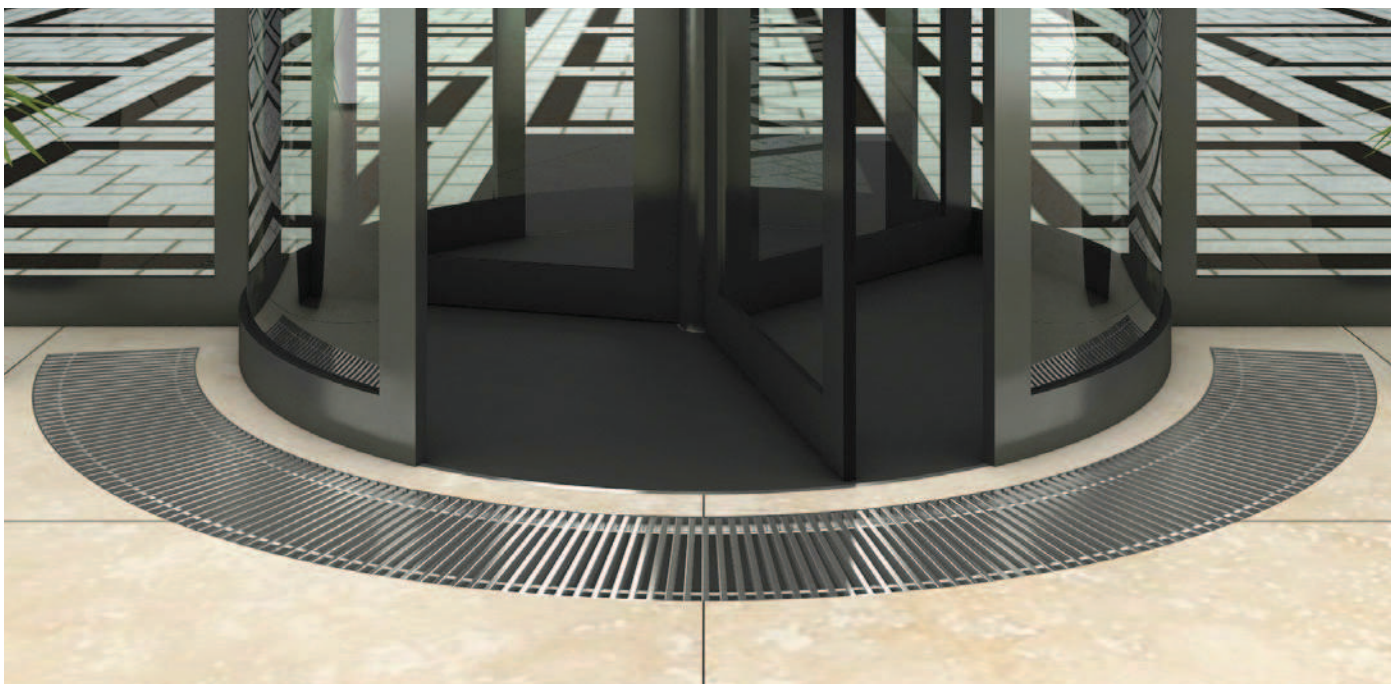
Grid design
R lateral

Material and colours
of lamellas
20 beech
21 oak
22 mahogany

Grid type for connected KORAFLEX FK
0 grid designed for the case type P0 or for the first
connectors in the connected cases assembly
2 grid designed for the second and every subsequent
connectors in the connected cases assembly*

Grids design

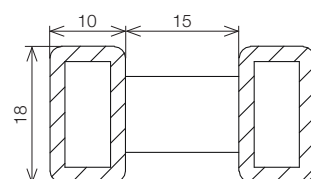
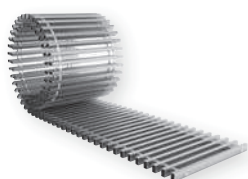
Stainless steel Roll



Stainless steel Roll – rolling design

Stainless steel Roll – linear design*

Permeability 60 %



Dimensions in mm

* Ordering of the aluminium linear cover grids is only possible with the appropriate convectors
 * The frame is not part of the cover grid but part of the floor convectors.

The Roll design is suitable only for dry environment (material AISI 304)



The floor grids are made of natural materials and therefore minor deviations in the colour design cannot be eliminated. The supplier cannot fully guarantee the presented colours and accept claims due to possible colour deviations.

Ordering codes

Floor grids • Roll

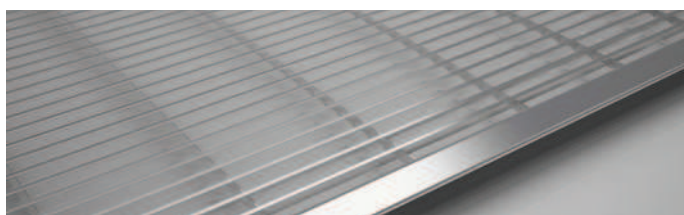
		Length (cm)		Width (cm)		Grid design		Grid type for connected KORAFLEX FK			
		R lateral		L longitudinal		0 grid designed for the case type P0 or for the first convectors in the connected cases assembly		2 grid designed for the second and every subsequent convectors in the connected cases assembly*			
stainless steel for dry environment	PM	-	R	-	30	4	0	0	
* custom-made design		Floor grids KORAFLEX PM Roll		Material of lamellas 30 stainless steel (for dry environment)		Lamellas' joint design 4 stainless steel (for dry environment)		Surface finish of the lamellas 0 without any finish			

Grids design

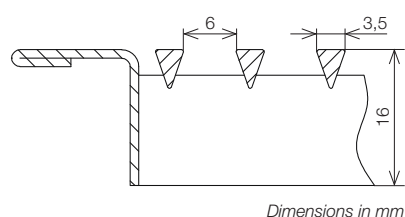
Stainless steel Cross



Stainless steel Cross



Permeability 63 %




* Ordering of the stainless steel Grids Cross is only possible with the appropriate convectors

Luxury finish

The stainless steel grid including the decorative frame is of the same material as the walkable grid. High level of design, high load bearing capacity, possible choice of design:

- dry environment stainless steel AISI 304
- humid environment stainless steel AISI 316

 The cover grid stainless steel Cross is designed for the case type P0 (see page 13 and 68). The stainless steel Cross up to 2 m length is supplied in one piece; above 2 m the grid is divided.

Floor convectors including the grid intended for use in the pool area (AISI 316) must be kept clean and washed regularly with clean water and maintained with suitable preparations for the preservation of the stainless steel.

The floor grids are made of natural materials and therefore minor deviations in the colour design cannot be eliminated. The supplier cannot fully guarantee the presented colours and accept claims due to possible colour deviations.

Ordering codes

Floor grids • Cross

						Grid design	Material of lamellas	Floor grid/case type		
						L longitudinal	40 stainless steel suitable (for dry environment) 41 stainless steel suitable (for humid environment)	0 grid designed for the case type P0 or for the first convectors in the connected cases assembly 2 grid designed for the second and every subsequent convectors in the connected cases assembly*		
		Length (cm)	Width (cm)							
Cross (for dry environment)*		PM	-	-	L	40	0	0 0
Cross (for humid environment)*		PM	-	-	L	41	0	0 0

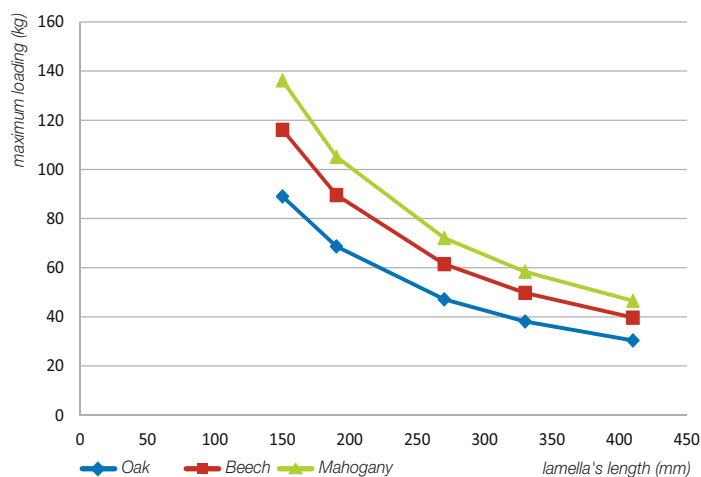
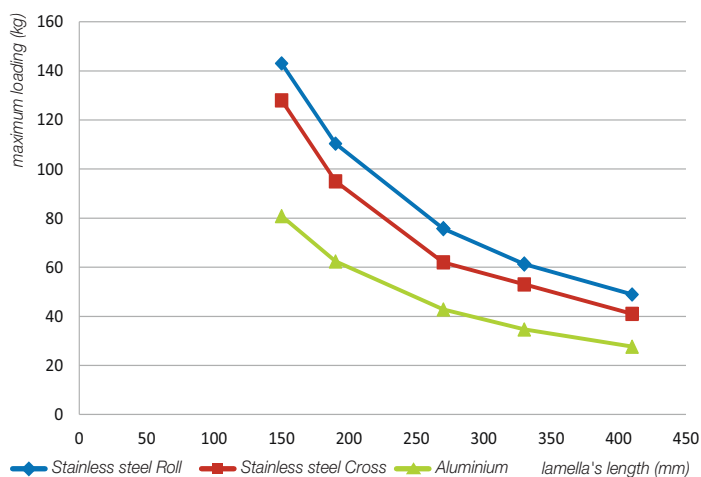
* custom-made design

Floor grids
KORAFLEX PM Cross

Lamellas' joint design
0 without any finish (PM Cross)

Surface finish
of the lamellas
0 without
any finish

Cover grids load bearing capacity



* Point load on 1 grid lamella according to produced widths.

Correction factor per flow area of the grid

% of flow surface	> 75	60	50	40	30
correction factor	1.00	0.95	0.90	0.85	0.60

The flow surface means the flow surface of the heat exchanger (width × length of the radiator) minus the area of the cover grid (all dimensions given in %). The heat output of the particular convectors is multiplied by this correction factor. Measurements of the KORAFLEX products performances include the cover grid, therefore no further recalculation is necessary any further recalculation.

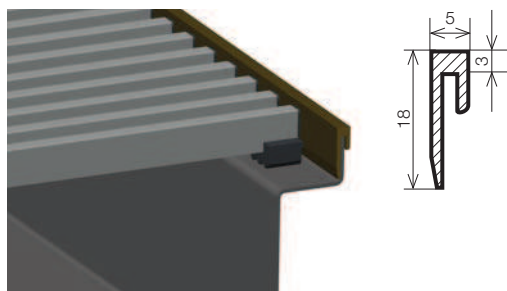
Manufacturing dimensions of the cover grids

Code designation	PM-xx/16	PM-xx/20	PM-xx/28	PM-xx/34	PM-xx/42
Width	150 mm	190 mm	270 mm	330 mm	410 mm

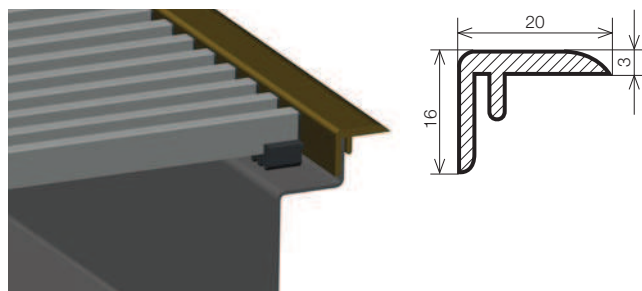
tolerance +0-1,5 mm

Profiles of the aluminium frames

U frame



F frame



The sketches dimensions are given in mm.

The convectors are fitted as standard with the silver U profile; when frame F is ordered it is enclosed with the delivery loose. Colour finishes of the decorative frames match the colour finishes of the aluminium grids, see page 19.

General information about products

Heating elements are produced using the state-of-the-art technologies. Most production operations are executed on CNC machines. The surface of elements is treated with powder coating of epoxy-polystyrene paints on an environment-friendly line. In-house production of high performance heat exchangers (copper pipe, aluminium lamellas) guarantees high quality and wide variety of products offered. To achieve an "invisible" impression you can order a black coated exchanger.

The case supplied as the standard is made of a black coated galvanised steel sheet. For use in wet environments you can order a case of a high corrosion resistance stainless steel. Thanks to our advanced production technology we are able to produce atypical dimensions, including angled and arc convectors' designs.

The shortest possible delivery periods are offered, from 3 to 10 working days. Guaranteed warranty and after-warranty service.



Universal regulation



Natural convection



Heating



Forced convection



Quiet operation



Swimming pools design



Cooling



Dry-cooling



Environmentally friendly



Minimal Energy consumption



Higher performance



Information

Transport and storage instruction

During transport the elements must be handled with extreme care and must be secured against motion and damage. The transport and storage area must be dry and protected from climatic influences.

Maintenance

The convectors must be kept clean and especially before the heating season any dirt and dust should be removed from the convectors. The fan convectors must be checked if the fans are not mechanically blocked (by fallen objects, a layer of dust, etc.).

Quality

Manufacturer is a holder of the certified quality management system as per ISO 9001:2008. The products are manufactured and tested according to EN 422. By using CE mark the producer confirms that the convectors are in conformity with the characteristics stated in the Declaration of Performance issued in conformity with the directive of EP and the Council (EU) No. 305/2011. This conformity was approved by the notified body No.1015, Strojírenský zkušební ústav, s.p. Brno.



Proven heating and cooling performances



Warranties

The products are subject to 2-year warranty. 10-year warranty is provided for the tightness of the heat exchanger. Full service and warranty terms and conditions are available on demand.

Manufacturer KORADO, a.s. is not responsible for damage caused by improper installation, or damages arising from poor electrical or thermal installations (such as fluctuating voltage or hydraulic pressure which deviates significantly from normal values).

Manufacturer reserves the right to change technical specifications without a prior notice.